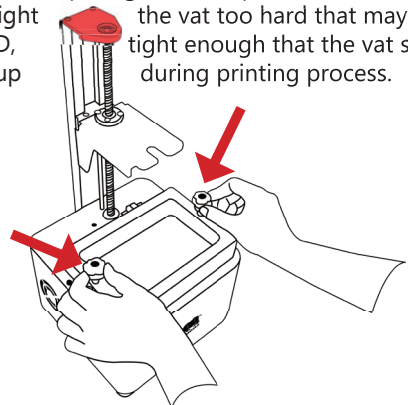
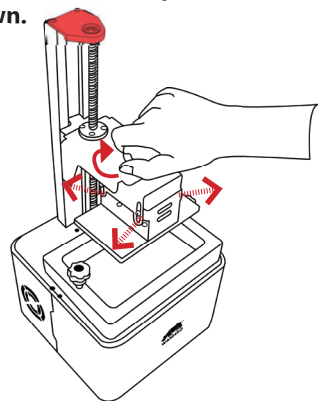


- 9 PREPARE DUPLICATOR 7 FOR PRINTING**
Place vat on top of the LCD screen and tighten vat screws to keep it tight on the printer. Make sure that don't tight the vat too hard that may damage the LCD, tight enough that the vat shouldn't be lift up during printing process.

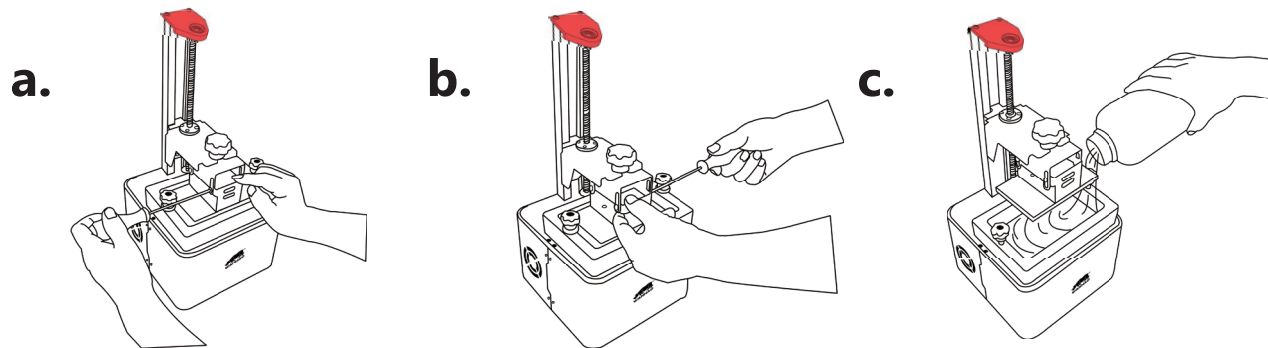


- 11 Tighten the Building plate knob and loosen the four screws at the sides so the platform can move freely up and down.**



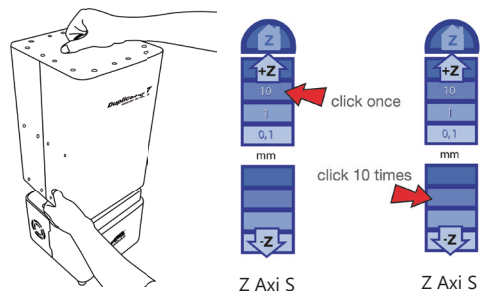
NOTE: Ensure that building plate's screws are completely free when lowering the platform to avoid damage the screen.

- 13 Press the the building platform smoothly with one hand and tighten 4 screws. All 4 screws should be now tighten. Now lift the building plate and fill the vat with resin. Print don't consume a lot of resin, a quarter full vat is enough for a medium sized print.**

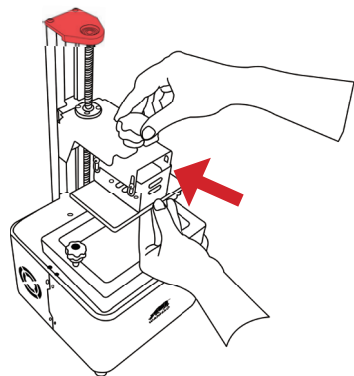


NOTE: Don't push the build platform too hard to avoid breaking the LCD screen. Make sure the platform touches the screen sufficiently.

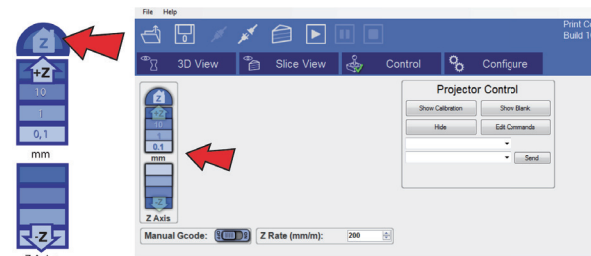
- 14 Place the hood back onto the printer. In control panel press Z home and place the platform on home position**



- 10 Slide the building plate onto the building plate holder. Make sure the build compound with groove side toward the printer.**



- 12 Now click on the "Control" tab. Press the "Home" button to lower the platform towards the screen. The platform will move down to be set on the screen (level 0 in Z axis.) and stop.**



NOTE: once started, the print can't be paused and refilled so it's safer to over-fill and reuse the resin.

- 15 Now you are ready to print, Press play after you sliced the model. Once the print has finished, The CW software shows that "Print 100% complete" and will stop.**

TIP: If you experience any issue configuring the screen resolution or usb port. Visit our video tutorial at WANHAO VIDEO at www.wanhao3dprinter.com.

REV.A



WANHAO DUPLICATOR 7 GETTING STARTED GUIDE

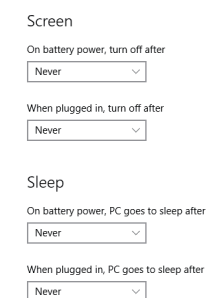
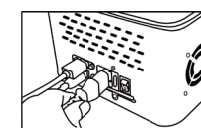
- 1 DOWNLOAD AND INSTALL SOFTWARE**

Go to www.wanhao3dprinter.com and download "Creation Workshop" located at "Download software Duplicator 7". The latest version is always online. Extract the file and install the software by clicking on CW exe.



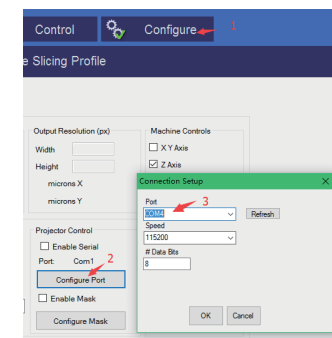
- 2 UNPACK AND CONNECT CABLES**
With the printer switched off, connect:

- A. Connect the HDMI cable to your computer and printer.
- B. Connect the USB cable to your computer and Printer.
- C. Set off mode the PC power & mode during Printing process, The sleeping mode may effects the printing quality.
- D. Connect the power supply to printer.



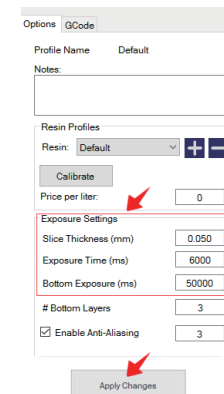
- 5 CONNECT SOFTWARE AND PRINTER**

In Creation Workshop, click on "Configure", and then open the subfolder "Configure Machine". In the configuration folder connect the printer to the computer by clicking on the button "Configure". Select the port you have connected the USB to and set the speed to 115200 and data bits to 8. "OK" and finally press "Apply Change". To connect your computer and the duplicator 7 by clicking the high light connecting button. After connecting the discounting button would be high light.



- 7 SLICE OBJECT**

Go to configure slicing profile Change the slice thickness from 0.02 to 0.1; exposure time 4000 to 12000 (wanhao resin); Bottom exposure time 50000 to 200000 (wanhao resin). And Click "Apply Changes"

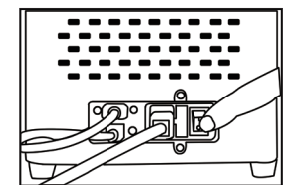


- 3 CONFIGURE SCREEN RESOLUTION**

Make sure you have the correct resolution on your screen as 2560*1440. This may appears sometimes as 1440*2560. Note that the right resolution is 2560*1440.

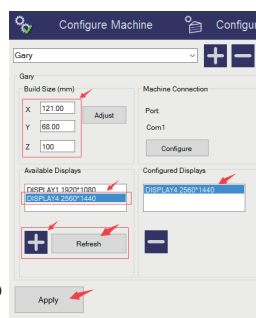


- 4 SWITCH ON PRINTER**
Turn on the switch behind your computer and printer. Open the software and load the object (STL, OBJ or AMF)

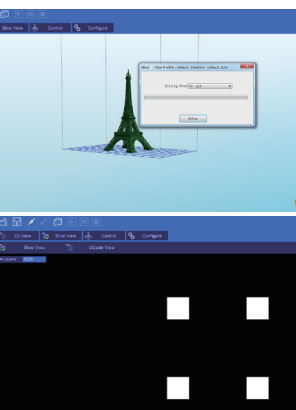


- 6 CONFIGURE BUILD SIZE AND SLICE OBJECT**

Once connected the printer to the computer. Go to "Configure Machine" Change the build size exactly to the following Pic. By clicking the display resolution 2560*1440, then click + to add the display to software setting. Finally click Apply to admit the change.



- 8** Click the Load the object which would be located in the build area. Now Click "3D View" and check and adjust the object to ensure it is placed inside the printing area. Press the slice button to start slicing operation.



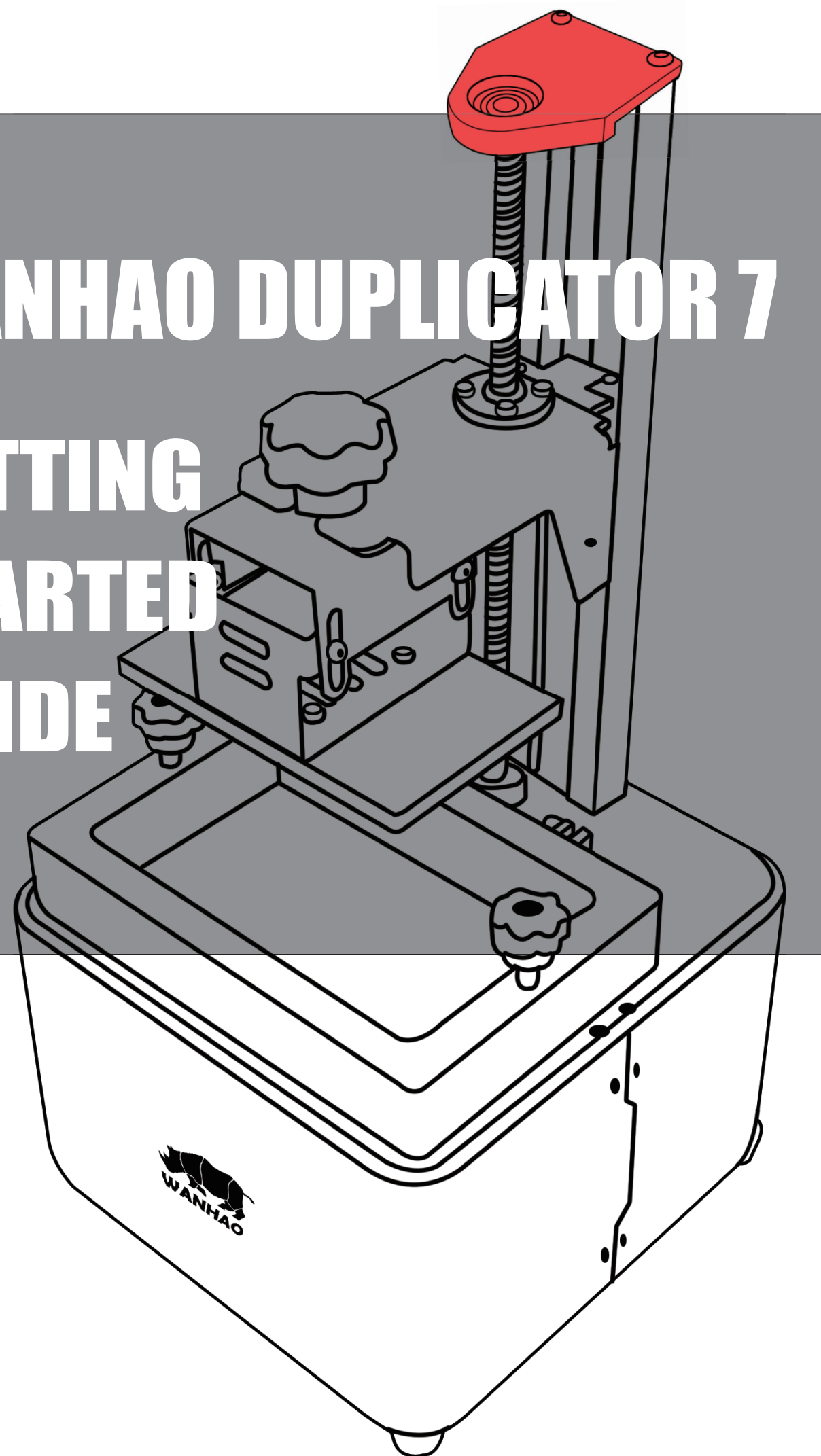
Now open "Slice View" to check that the first layer of every object is in contact with the platform.

TIP: If you experience any issue configuring the screen resolution or usb port. Visit our video tutorial at WANHAO VIDEO at www.wanhao3dprinter.com.

REV.A

WANHAO DUPLICATOR 7

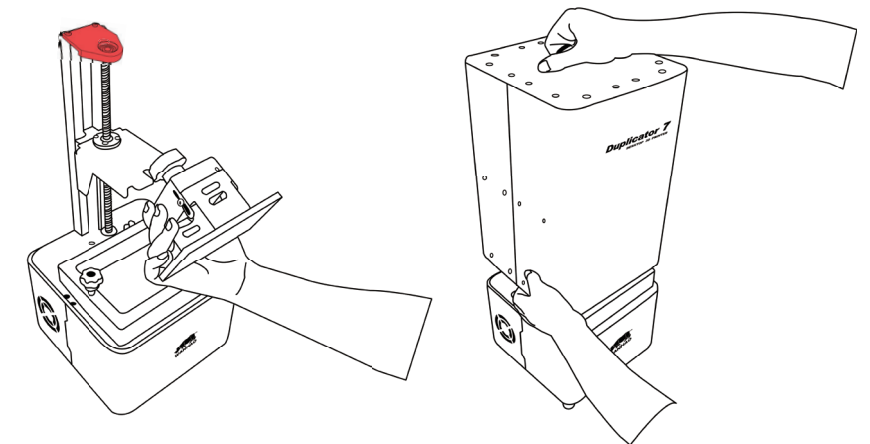
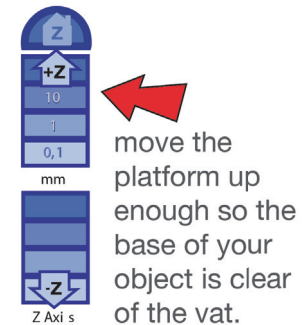
GETTING STARTED GUIDE



16 CLEANING AND FINISHING THE PRODUCT

Wear gloves and remove the hood from the printer, loosen the building plate knob and rotate with little bit angle and let leftover resin drop into the vat, remove as much liquid from the plate and object as possible for further prints. Use the plastic scraper to remove the printed object safely.

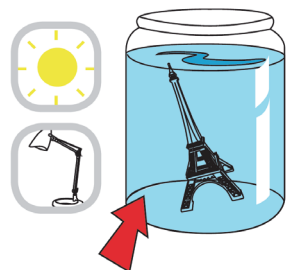
Note: Place the hood back to protect the resin from light to prevent the resin lose its properties.



17 POST PROCESSING

Place the platform to a washing-up bowl. Remove the objects by sliding the scraper in at their base. Wash off any liquid polymer in alcohol container. You can gently clean it with a soft brush or sponge, take care not to damage it, it will not achieve full hardness until after post exposing in light. An ultrasonic cleaner will clean your objects without the possibility of damaging them.

Check your object is thoroughly clean as resin cannot be easily removed afterwards and then leave it under water in sunlight for about 10 minutes. The longer you leave it under water the darker the colour will get, some colour change is inevitable. When it is completely post-exposed it will be strong and have a dry surface. Empty the contents of the vat back into the bottle by pouring through a sieve. With the vat on a flat surface wipe the inside thoroughly with absorbent paper. Replace the film when damaged.



Alcohol

WANHAO FACTORY CO.,LTD
NO.198 Gaoke Road FuYang HangZhou China
WANHAO Help Desk: 86-571-23290996
(Operating Hours: Mon-sat ; 8:00am -5:00pm)

support@wanhao3dprinter.com
www.wanhao3dprinter.com

REV.A